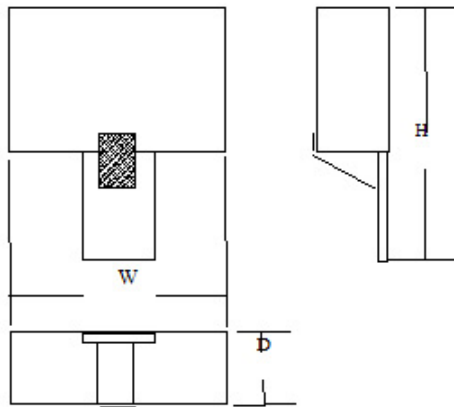


DIMENSIONS

CAT.#	W	H	D	LAMPING
2051-14	11"	14"	4"	2 13 W CFL
2051-12	8"	12"	4"	2 13 W CFL



ORDERING INFORMATION

cat #--- finish-- - lamping--- voltage---- options -----

TECHNICAL SPECIFICATIONS

BALLAST	MOUNTING	DIFFUSER	MATERIALS	FINISHES	OPTIONS
Electronic Normal power factor ,120 V	Mounts to all standard electrical junction boxes. Hardware included	Off white "linen" fabric	Decorative bracket is heavy gauge solid aluminum.	Fabric shade Heavy gauge aluminum bracket. C.R. steel back plate.	High power factor, multi voltage transformer. Other fabric styles Painted finishes.

FEATURES

Fabric allows for a "softer" look but still has a modern appearance. Light is distributed up and down as well as being diffused front and sides through the fabric.

UL LABELED FOR damp location-----made in USA